

United States Department of the Interior
National Park Service

National Register of Historic Places
Inventory—Nomination Form

For NPS use only
received _____
date entered _____

Continuation sheet Wyoming Vehicular Bridges Item number 4

Page 2

Bridge	Owner/Administrator	Location of Legal Description
10 DSD Bridge over Cheyenne River	Niobrara County	Niobrara County Courthouse P.O. Box 398 Lusk Wyoming 82225
11 DUX Bessemer Bend Bridge	Natrona County	Natrona County Courthouse 200 North Center Casper Wyoming 82602
12 DXN Bridge over Missouri River	Crook County	Crook County Courthouse P.O. Box 37 Sundance Wyoming 82729
13 EAU Arvada Bridge	Sheridan County	Sheridan County Courthouse 220 South Main Sheridan Wyoming 82801
* EAW Bridge over Little Goose Creek	Sheridan County	same
* EAX Bridge over Little Goose Creek	Sheridan County	same
14 EBF Bridge over Powder River	Sheridan County	same
15 ECR Kooi Bridge	Sheridan County	same
16 ECS Bridge over Big Goose Creek	Sheridan County	same
17 EDL Peloux Bridge	Johnson County	Johnson County Courthouse Main and Fort Streets Buffalo Wyoming 82834
18 EDZ Irigary Bridge	Johnson County	same
* EEN Schoonover Bridge	Johnson County	same
19 EFP Bridge over Owl Creek	Hot Springs County	Hot Springs County Courthouse Thermopolis Wyoming 82443
20 EJE Bridge over Shell Creek	Big Horn County	Big Horn County Courthouse Fifth and C Streets Basin Wyoming 82410
21 EJP County Line Bridge	Big Horn County	Big Horn County Courthouse Fifth and C Streets Basin Wyoming 82443
22 EJZ Bridge over Shoshone River	Big Horn County	same

United States Department of the Interior
National Park Service

National Register of Historic Places
Inventory—Nomination Form



Continuation sheet Wyoming Vehicular Bridges Item number 7

Page 17

ERT (continued)

Uinta County Road CN19-217 milepost: 1.4
1.1 mile south of Fort Bridger T15N, R115W, S4.
USGS Fort Bridger 7½' quad. UTM: 12.550960.4572200

EJZ Bridge over Shoshone River Big Horn County ✓

erection date: 1925-26 contractor: McGuire and Blakeslee Lovell Wy.
span length: 95'0" ea. abutments: concrete retaining w/ sweptback wings
total length: 389'6" piers: concrete solid shaft on spread ftgs.
roadway width: 20'0" roadway: steel stringers w/ concrete deck
span type: simple approaches: none

Four-span, steel rigid-connected 10-panel Warren pony truss with polygonal top chords and verticals.

top chords: two channels w/ cover plates and lacing; bottom chords: four angles w/ batten plates; verticals: four angles w/ gusset plates; diagonals: four angles w/ lacing or gusset plates; lattice guardrails.

Big Horn County Road CN9-111 (Cowley-Lovell Road) milepost: 0.5
2.1 miles south of Lovell T56N, R96W, S17.
USGS Lovell 7½' quadrangle UTM: 13.702810.4967980

An unusual Warren variation features polygonal top chords with verticals at alternating panel points. Four pony trusses and one through of this type are included in the survey. The through and the best pony example are included here.

DUX Bessemer Bend Bridge Natrona County (over North Platte River)

erection date: 1921-22 contractor: unknown
span length: 195'0" through abutments: concrete full retaining
65'0" ponies
total length: 330'0" piers: concrete solid shaft
roadway width: 18'10" roadway: steel stringers w/ concrete deck
span type: simple approaches: two steel rigid-connected Warren pony trusses with verticals at alternating panel points

Single-span, steel rigid-connected Warren through truss with verticals at alternating panel points.

top chords: two channels w/ cover plates and lacing; bottom chords: two channels w/ batten plates; verticals: four angles w/ lacing; diagonals: two channels w/ lacing or rolled beams; struts: four angles w/ lacing; lateral bracing: two angles w/ lacing; sway bracing: angle; steel pipe guardrails.

**United States Department of the Interior
Heritage Conservation and Recreation Service**

**National Register of Historic Places
Inventory—Nomination Form**



Continuation sheet Wyoming Vehicular Bridges Item number 8

Page 18

DML (continued)

also called the Butler Bridge. O'Neil's bid for \$11,920 was the lower of only two received. With a span of 170', the Butler Bridge is the longer of two pin-connected Camelback throughs remaining in use on the county road system. As such it is an important early example of its generic type.

DMS Bridge over Cow Creek

This bridge is one of three contracted for by Carbon County in March 1915. The construction contract was awarded to the Petry-Moulton Company of Cheyenne for this 40' span (\$1300), a 50' truss across Spring Creek three miles south of Saratoga (\$1440) and an 80' truss over the Medicine Bow River (\$2190). Petry-Moulton had underbid several other bridge manufacturers - the Midland Bridge Company, Pueblo Bridge Company, James J. Burke and Company, the Kansas City Bridge Company and the Monarch Engineering Company. This small pony truss is a modified Warren, with verticals at alternating panel points, one of four examples of its type in Wyoming's state and county road systems. It is also the oldest traceable Warren truss still in use on a county road in the state. As such it is one of the more significant of Wyoming's vehicular trusses.

DOE Bridge over Laramie River

The Wyoming Highway Department awarded the construction contract for this bridge in May 1926 to N.A. Swenson of Laramie as part of Federal Aid Project 156B. Originally located over the Laramie River on the Bosler-Laramie Road (the old Lincoln Highway, U.S. 30), this bridge was replaced in 1932 by two 100' spans, which were in turn replaced in 1947. Now located on a secondary county road north of Bosler, this bridge is distinguished somewhat as the only two-span Pratt Half-hip still in use in the state. It is one of the best examples of a relatively uncommon truss configuration.

DSD Bridge over Cheyenne River

Probably originally a railroad truss, subsequently moved to this location, this bridge is the only example of its type functioning presently on the county road system in Wyoming. As one of only two rigid-connected Pennsylvania throughs in the state, it is an important early remnant.

DUX Bessemer Bend Bridge

Built in 1921-22 for Natrona County, this bridge is a unique subtype of the standard Warren truss. One of only three Warren throughs still in use on the county road systems, it is the only one with verticals at alternating panel points; the two pony approach spans are also unusual, though not unique in their configuration. This bridge spans the North Platte River at the historic Bessemer Bend crossing of the Oregon Trail, an important emigrant site.

**United States Department of the Interior
National Park Service**

**National Register of Historic Places
Inventory—Nomination Form**

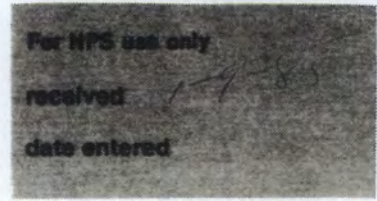
For NPS use only

received

date entered

Continuation sheet	Wyoming Vehicular Bridges	Item number	10	Page	4
EJZ	Big Horn County Road CN9-111 (Cowley-Lovell Road) milepost: 2.1 miles south of Lovell USGS Lovell 7½' quadrangle	UTM:		0.5 T56N, R96W, S17 13.702810.4967980	
DUX	Natrona County Road CN1-58 (Bessemer Bend Road) milepost: town of Bessemer Bend USGS Emigrant Gap 7½' quadrangle	UTM:		2.0 T32N, R81W, S3 13.374785.4736380	
DFU	Carbon County Road 120-1 0.1 mile south of Elk Mountain USGS Elk Mountain 7½' quad.	milepost: UTM:		0.1 T20N, R90W, S20 13.382700.4615735	
EBF	Sheridan County Road CN3-269 15.1 miles northeast of Leiter USGS Cabin Creek NE 7½' quad.	milepost: UTM:		13.5 T57N, R76W, S31 13.416160.4969980	
DDZ	Sublette County Road 136 0.9 mile west of Boulder USGS Boulder Lake 7½' quad.	milepost UTM:		0.20 T32N, R108W, S9 12.604270.4733690	
ELS	Fremont County Road CN10-21 2.8 miles northwest of Dubois USGS Dubois 7½' quadrangle	milepost: UTM:		0.1 T41N, R108W, S3 12.606700.4822705	
ELS	Old U.S. 14/16 (Cody-Yellowstone Highway) Approximately 2½ miles west of Cody USGS Cody 15' quadrangle	UTM:		T52N, R102W, S35 12.647310.4930010	
Rairden Bridge	Immediately south of Big Horn County Road CN9-30 5.7 miles south of Manderson USGS Rairden 7½' quadrangle	UTM:		(abandoned) T49N, R92W, S28 13.267080.4897390	
Hayden Arch Bridge	Old U.S. 14/16 (Cody-Yellowstone Highway) Approximately 2½ miles west of Cody USGS Cody 15' quadrangle	UTM:		T52N, R102 W, S35 12.647310.4930010	

United States Department of the Interior National Park Service National Register of Historic Places Inventory—Nomination Form



Continuation sheet

Item number

Page

Multiple Resource Area
Thematic Group

Name Vehicular Truss and Arch Bridges in Wyoming Thematic Resources
State Wyoming

Nomination/Type of Review

Date/Signature

- | | | | |
|---|----------------------------------|--------|-----------------------|
| 11. ELS Bridge over Big Wind River | Substantive Review | Keeper | Carol Shue 2-22-85 |
| | | Attest | William B. Bushy |
| 12. Ely Wind River Diversion Dam Bridge | Entered in the National Register | Keeper | Delores Byers 2/22/85 |
| | | Attest | |
| 13. CQA Four Mile Bridge | Entered in the National Register | Keeper | Delores Byers 2/22/85 |
| | | Attest | |
| 14. EFP Bridge over Owl Creek | Entered in the National Register | Keeper | Delores Byers 2/22/85 |
| | | Attest | |
| 15. AJX Bridge over South Fork and Powder River | Entered in the National Register | Keeper | Delores Byers 2/22/85 |
| | | Attest | |
| 16. EDL Peloux Bridge | Substantive Review | Keeper | Carol Shue 2-22-85 |
| | | Attest | William B. Bushy |
| 17. EDZ Irigary Bridge | Entered in the National Register | Keeper | Delores Byers 2/22/85 |
| | | Attest | |
| 18. DUX Bessemer Bend Bridge | Entered in the National Register | Keeper | Delores Byers 2/22/85 |
| | | Attest | |
| 19. DSD Bridge over Cheyenne River | Entered in the National Register | Keeper | Delores Byers 2/22/85 |
| | | Attest | |
| 20. Hayden Arch Bridge | Substantive Review | Keeper | Carol Shue 2-22-85 |
| | | Attest | William B. Bushy |

NATIONAL REGISTER OF HISTORIC PLACES
EVALUATION/RETURN SHEET

DUX Bessemer Bend Bridge (Vehicular Truss
and Arch Bridges in Wyoming TR)
Natrona County
WYOMING

JAN 9 1985

Working No. _____
Fed. Reg. Date: 2/4/86
Date Due: 2/8/85 - 2/23/85
Action: ACCEPT 2-72-85
 RETURN
 REJECT
Federal Agency: _____

Entered in the
National Register

- resubmission
- nomination by person or local government
- owner objection
- appeal

Substantive Review: sample request appeal NR decision

Reviewer's comments:

Recom./Criteria _____
Reviewer _____
Discipline _____
Date _____
_____ see continuation sheet

Nomination returned for: _____ technical corrections cited below
_____ substantive reasons discussed below

1. Name

2. Location

3. Classification

Category	Ownership Public Acquisition	Status Accessible	Present Use
----------	---------------------------------	----------------------	-------------

4. Owner of Property

5. Location of Legal Description

6. Representation in Existing Surveys

Has this property been determined eligible? yes no

7. Description

Condition

- excellent
- good
- fair
- deteriorated
- ruins
- unexposed

Check one

- unaltered
- altered

Check one

- original site
- moved date _____

Describe the present and original (if known) physical appearance

- summary paragraph
- completeness
- clarity
- alterations/integrity
- dates
- boundary selection

8. Significance

Period _____ Areas of Significance—Check and justify below

Specific dates _____ Builder/Architect _____
Statement of Significance (*in one paragraph*)

- summary paragraph
- completeness
- clarity
- applicable criteria
- justification of areas checked
- relating significance to the resource
- context
- relationship of integrity to significance
- justification of exception
- other

9. Major Bibliographical References

10. Geographical Data

Acreage of nominated property _____
Quadrangle name _____
UTM References _____

Verbal boundary description and justification _____

11. Form Prepared By

12. State Historic Preservation Officer Certification

The evaluated significance of this property within the state is:

____ national ____ state ____ local

State Historic Preservation Officer signature _____

title _____ date _____

13. Other

- Maps
- Photographs
- Other

Questions concerning this nomination may be directed to _____

Signed _____ Date _____ Phone: _____

Comments for any item may be continued on an attached sheet



DUX Bessemer Bend Bridge
Natrona County Wyoming
1 March 1982 photo 38

north toward south web

Clayton B. Fraser
Fraserdesign



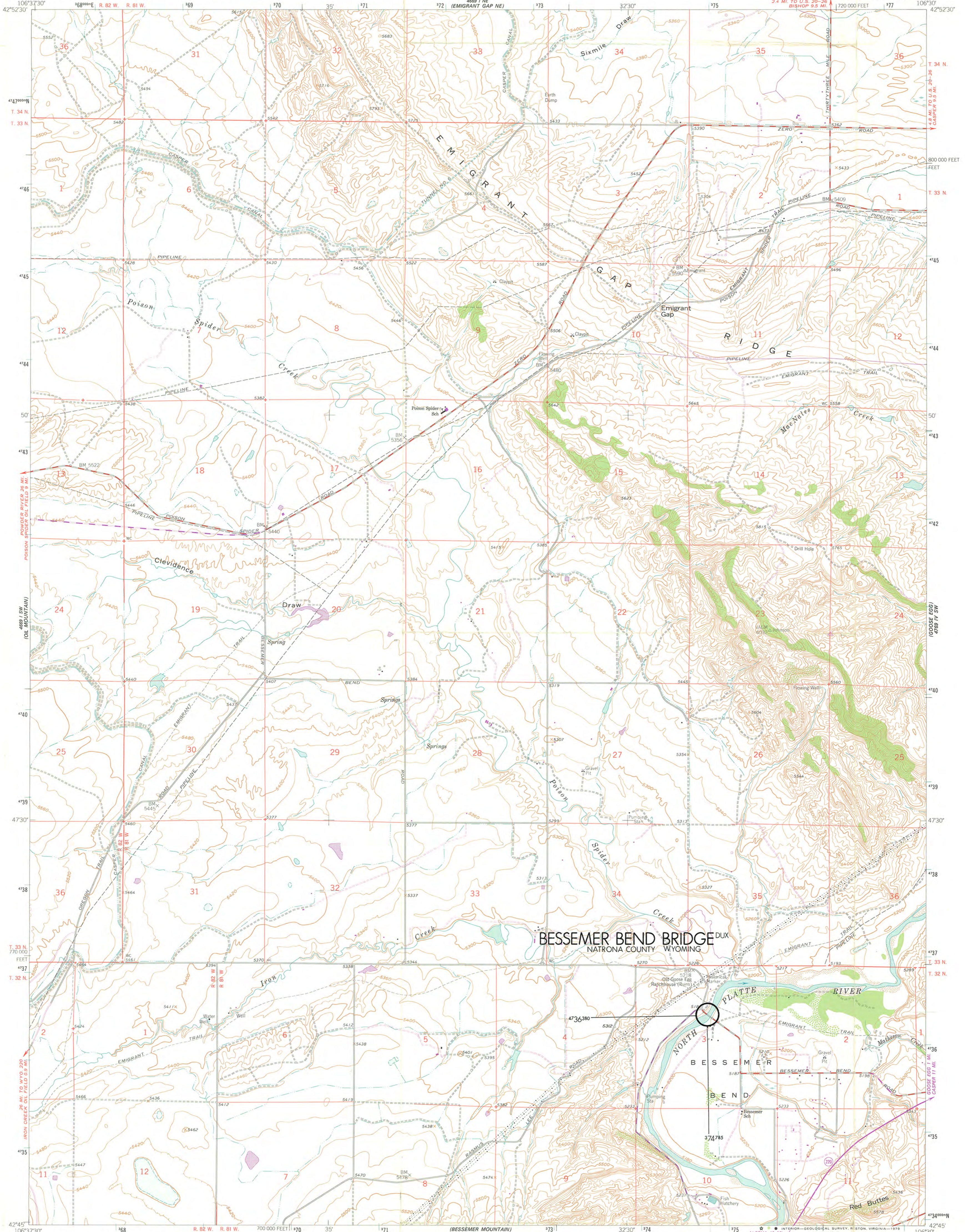
DUX Bessemer Bend Bridge
Natrona County Wyoming
1 March 1982 photo 39
west toward east portal

Clayton B. Fraser
Fraserdesign



DUX Bessemer Bend Bridge
Natrona County Wyoming
1 March 1982 photo 40
north along south web

Clayton B. Fraser
Fraserdesign



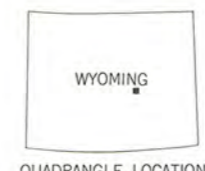
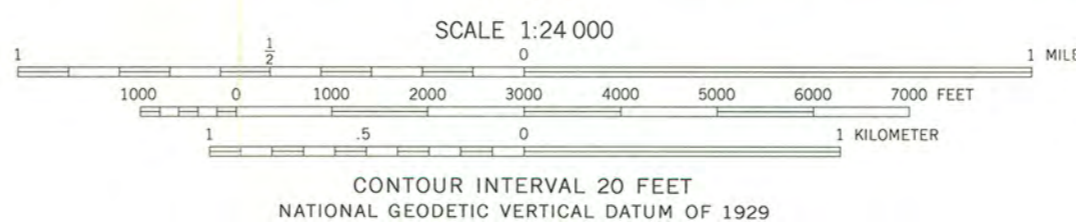
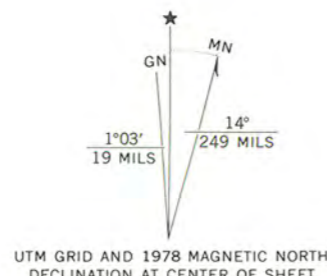
Mapped, edited, and published by the Geological Survey

Control by USGS and NOS/NOAA

Topography by photogrammetric methods from aerial photographs taken 1947 and planetable surveys 1950. Revised 1960

Polyconic projection. 1927 North American datum
10,000-foot grid based on Wyoming coordinate system,
east central zone
1000-meter Universal Transverse Mercator grid ticks,
zone 13, shown in blue

Revisions shown in purple compiled from aerial photographs taken
1976. Mapped edited 1978. This information not field checked



ROAD CLASSIFICATION

Primary highway, hard surface	Light-duty road, hard or improved surface
Secondary highway, hard surface	Unimproved road
Interstate Route	U. S. Route
	State Route

THIS MAP COMPLIES WITH NATIONAL MAP ACCURACY STANDARDS
FOR SALE BY U. S. GEOLOGICAL SURVEY, DENVER, COLORADO 80225, OR RESTON, VIRGINIA 22092
A FOLDER DESCRIBING TOPOGRAPHIC MAPS AND SYMBOLS IS AVAILABLE ON REQUEST

EMIGRANT GAP, WYO.
N4245-W10630/7.5

1960
PHOTOREVISED 1978
DMA 4969 I SE-SERIES V874